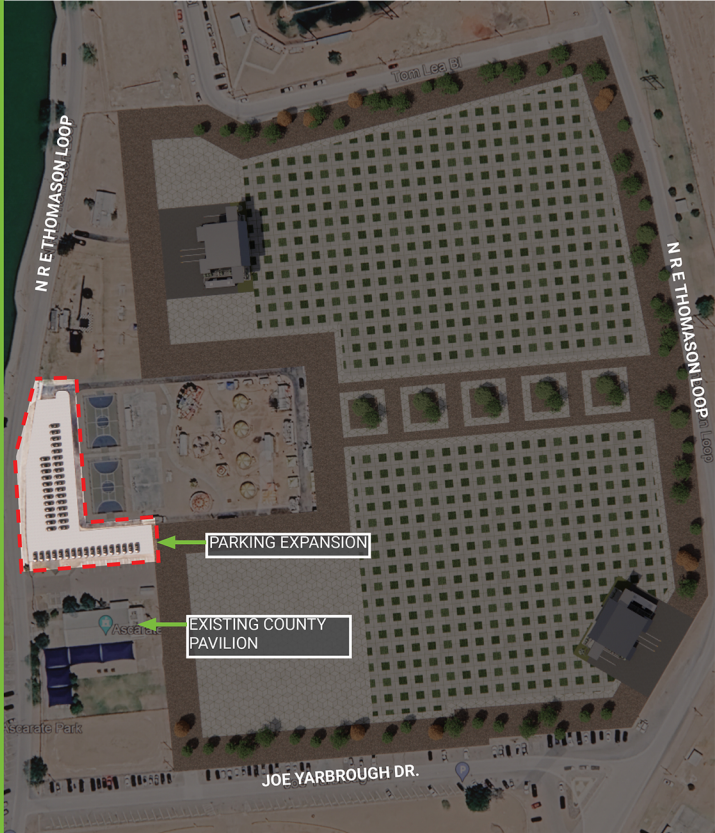


PARKS & RECREATION

A3-ASCARATE REGIONAL PARK PAVILION PARKING EXPANSION

6900 DELTA DR., EL PASO, TX 79905



PROJECT DESCRIPTION:

AT ASCARATE PARK, THIS PROJECT INVOLVES THE EXPANSION OF PARKING AREAS TO SUPPORT THE ASCARATE PAVILION FACILITY AT ASCARATE PARK, WHICH IS LOCATED IMMEDIATELY BELOW THE PROPOSED PARKING AREA OUTLINED IN RED ON THE CONCEPTUAL IMAGE ON SCREEN. THE INCREASED PARKING WILL INCLUDE THE INSTALLATION OF ILLUMINATION AND LANDSCAPING AND WILL IMPROVE CONNECTIVITY BETWEEN THE PAVILION AND THE PROPOSED FESTIVAL AREA IMMEDIATELY TO THE EAST, WHICH WAS PREVIOUSLY DESCRIBED IN PROJECT A1.

CONSTRUCTION COST
\$483,257

SOFT COST
\$78,002

TOTAL COST
\$561,260