

UNAUDITED INTERIM FINANCIAL REPORT

FOR THE FISCAL MONTH ENDED
JANUARY 31, 2020





Executive Financial Summary

	January 2020	YTD	YTD % of Budget
All Funds			
Revenues	\$81,159,055	\$229,774,371	58%
Expenses	42,175,932	117,470,606	22%
General Fund			
Revenues	\$67,097,032	\$187,313,556	63%
Expenses	31,837,397	87,705,938	25%

Condensed Financial Report For the Month Ended January 31, 2020



El Paso County, Texas Auditor's Unaudited Monthly Condensed Financial Report for the month ended January 31, 2020

Budgeted Funds	Fund Balances	YTD Revised Budget	YTD/LTD Expenditures	YTD Encumb./Req.	YTD Available Budget
General Fund	\$ 187,056,849	\$ 383,720,668	\$ 87,705,938	\$ 6,333,607	\$ 289,681,123
Special Revenue	28,496,705	51,648,267	6,611,361	3,871,184	41,165,722
Debt Service	19,098,289	19,732,451	-	-	19,732,451
Enterprise	17,187,138	8,061,022	6,119,189	-	1,941,833
Internal Service (non-budgeted)	3,492,192	-	9,464,395	-	-
Total Year to Date (YTD)	\$ 255,331,173	\$ 463,162,408	\$ 109,900,883	\$ 10,204,791	\$ 352,521,129
Multiyear Funds	Fund Balances	LTD Revised Budget	LTD Expenditures	LTD Encumb./Req.	LTD Available Budget
Capital Projects	\$ 31,428,682	\$ 250,804,207	\$ 207,759,115	\$ 6,230,948	\$ 36,814,144
Grants	225,203	146,523,832	107,498,651	2,130,839	36,894,342
Agency EPC-CSCD		14,288,742	5,436,758	121,128	8,730,856
Total Life to Date (LTD)	\$ 31,653,885	\$ 411,616,781	\$ 320,694,524	\$ 8,482,915	\$ 82,439,342

Additional information may be obtained at:

the County Auditor's Office, 800 East Overland Street, Room 406, El Paso, Texas 79901-2407

or online at <http://www.epcounty.com/auditor/publications/monthlyreports.html>



Revenues

Revenue Summary by Fund Type



REVENUES	MTD ACTUALS	YTD ACTUALS
AGENCY FUND	\$ (1,460)	\$ (7,800)
AP-BASIC SUPERVISION	(197,588)	(1,526,083)
AP-COMMUNITY CORRECTIONS	-	(277,607)
AP-COUNTY GRANTS	(12,215)	(49,006)
AP-DIVERSION TARGET PROGRAM	(6,820)	(1,376,500)
AP-OTHER GRANTS	(21,471)	(97,848)
AP-PROG PARTICIPANTS	(3,624)	(7,313)
AP-RESTITUTION TO VICTIM	(60)	(241)
AP-TREATMENT ALT TO INCARCERATION	-	(309,703)
CAPITAL PROJECTS FUND	(68,018)	(241,800)
COUNTY GENERAL FUND	(67,097,032)	(187,313,556)
COUNTY GRANTS	(1,270,074)	(3,397,947)
DEBT SERVICE	(5,996,334)	(16,382,400)
ENTERPRISE FUND	(500,955)	(938,192)
INTERNAL SERVICE	(2,798,819)	(8,637,608)
SPECIAL REVENUE	(3,184,586)	(9,210,766)
TOTAL	\$ (81,159,055)	\$ (229,774,371)

General Fund Revenue by Source YTD as of FM4



Revenue Source	FY 2020 Revenue	FY 2019 Revenue	Increase/(Decrease)
Property Taxes	\$ (160,488,730)	\$ (134,872,170)	\$ 25,616,560
Sales and Use Tax	(13,315,521)	(12,009,685)	1,305,837
Bingo Tax	(5,633)	-	5,633
State Mixed Beverage Tax	(704,049)	(643,832)	60,217
Licenses and Permits	(117,850)	(78,959)	38,891
Intergovernmental	(1,098,871)	(1,128,904)	(30,033)
Charges for Services	(8,963,190)	(9,807,532)	(844,342)
Fines and Forfeits	(1,237,671)	(1,413,265)	(175,594)
Interest	(664,130)	(698,438)	(34,308)
Miscellaneous Revenue	(534,829)	(485,474)	49,355
Other Financing Sources	(183,083)	(273,812)	(90,729)
Total	\$ (187,313,556)	\$ (161,412,069)	\$ 25,901,487

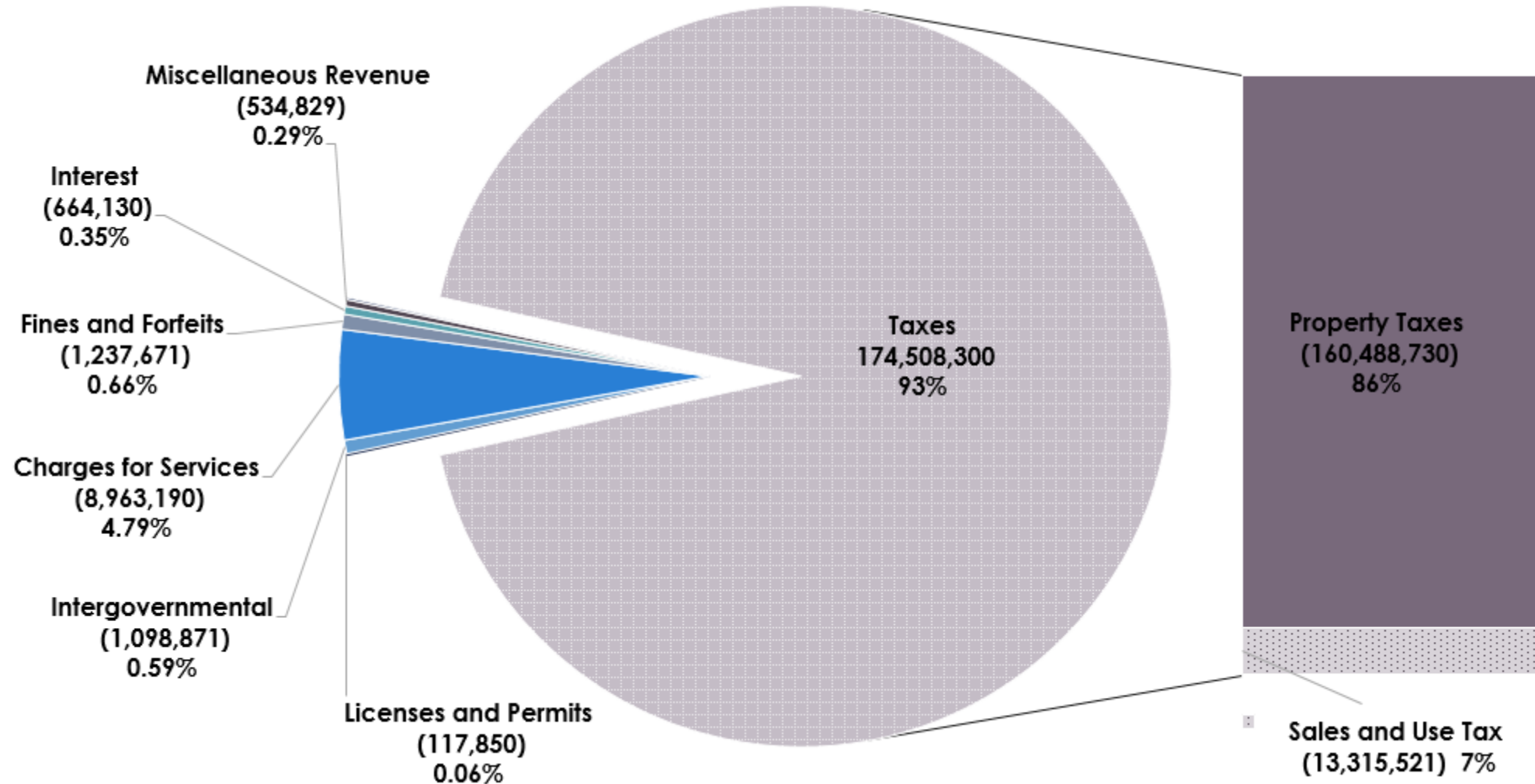
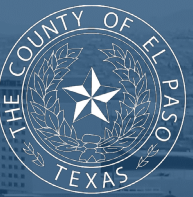
GENERAL FUND REVENUE BY SOURCE



Revenue by Source	Revised Budget	FM4	YTD Actuals	YTD % of Est. Budget Collected
Property Taxes	\$ (190,163,264)	\$ (58,910,950)	\$ (160,488,730)	84.40%
Sales and Use Tax	(49,000,000)	(4,279,799)	(13,315,521)	27.17%
Sales and Use Tax-ST Motor Vehicle	(5,300,000)	-	-	0.00%
Bingo Tax	(29,000)	(5,633)	(5,633)	19.43%
State Mixed Beverage Tax	(2,650,000)	(704,049)	(704,049)	26.57%
Vehicle Inventory Taxes	(75,000)	-	-	0.00%
Licenses and Permits	(287,000)	(22,327)	(117,850)	41.06%
Intergovernmental	(6,745,406)	(484,175)	(1,098,871)	16.29%
Charges for Services	(35,533,393)	(1,583,534)	(8,963,453)	25.23%
Fines and Forfeits	(5,043,350)	(392,701)	(1,237,407)	24.54%
Interest	(2,521,500)	(247,513)	(664,130)	26.34%
Miscellaneous Revenue	(1,224,700)	(284,093)	(534,829)	43.67%
Other Financing Sources	(1,068,000)	(182,257)	(183,083)	17.14%
Total	\$ (299,640,613)	\$ (67,097,032)	\$ (187,313,556)	62.51%

*FM1-33.33% of the fiscal year is expired

GENERAL FUND REVENUE BY SOURCE YTD AS OF FM4

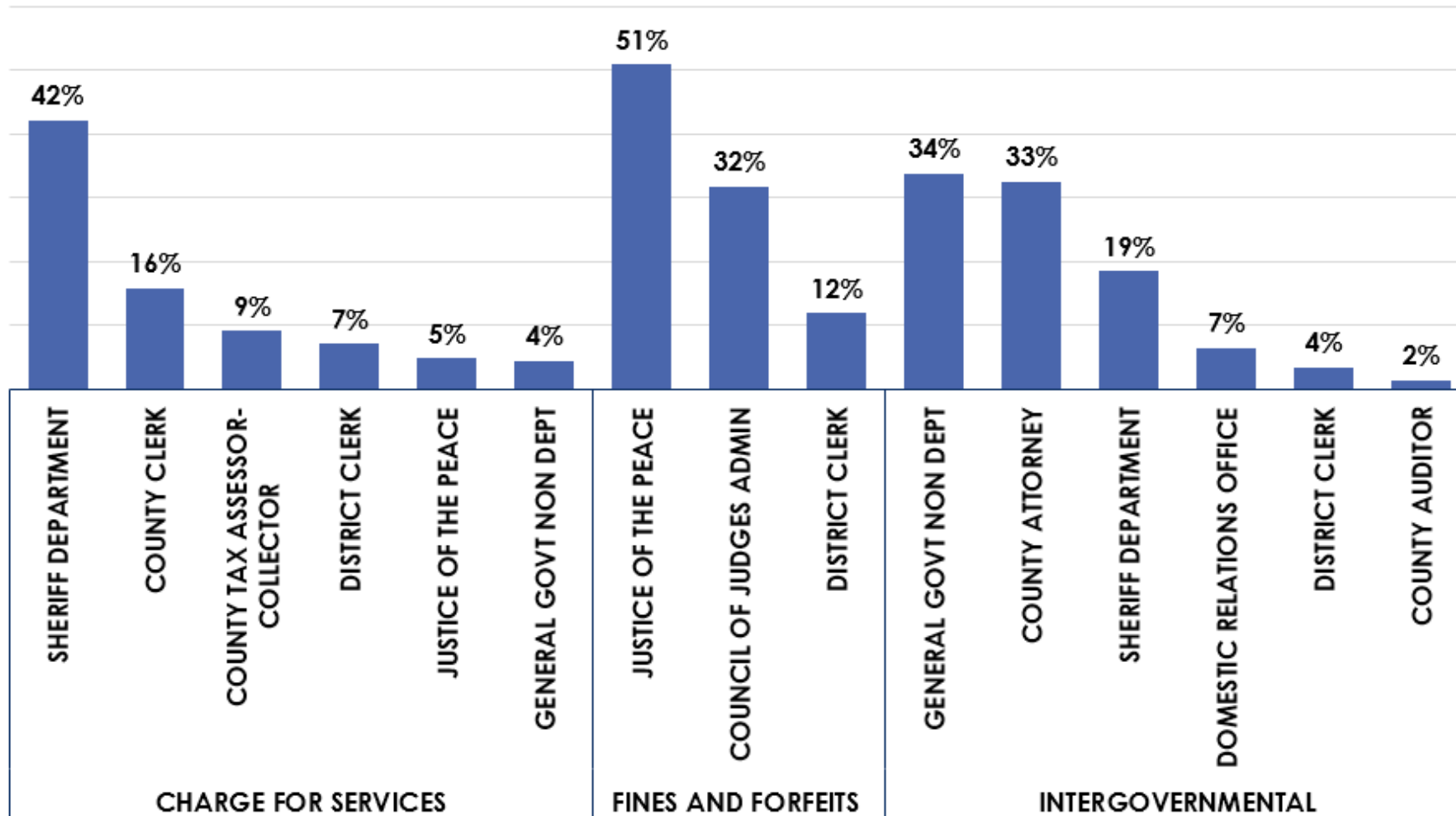




3 YEAR BUDGET – ACTUAL REVENUE COMPARISON

Revenue YTD as of FM4 (33.32% of Yr Expired)			
	2018	2019	2020
All Revenue Budget	\$ (262,681,603)	\$ (314,835,150)	\$ (299,640,613)
Total Revenue Actuals	(141,130,922)	(161,412,069)	(187,313,556)
Actual Collection As % of Budget	53.73%	51.27%	62.51%
Budget- Property Tax	\$ (160,939,048)	\$ (169,423,826)	\$ (190,163,264)
Total Actuals - Property Tax	(114,642,354)	(134,872,170)	(160,488,730)
Collections As % of Budget	71.23%	79.61%	84.40%
Budget Sales & Use Tax	\$ (46,100,000)	\$ (47,500,000)	\$ (49,000,000)
Total Actuals - Sales & Use Tax	(11,602,081)	(12,009,685)	(13,315,521)
Collections As % of Budget	25.17%	25.28%	27.17%

REVENUES BY DEPARTMENT





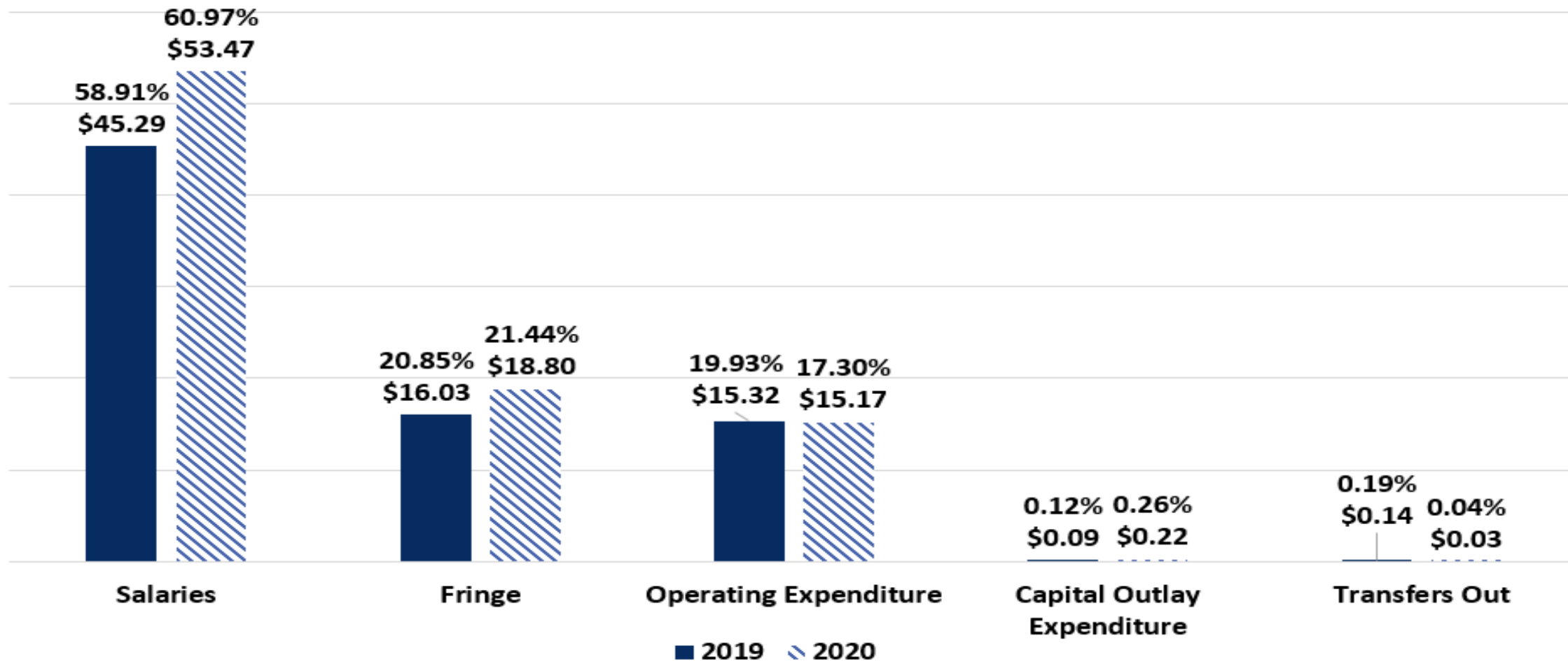
Expenditures

EXPENDITURE SUMMARY BY FUND TYPE



EXPENDITURES	MTD ACTUALS	YTD ACTUALS
AP-BASIC SUPERVISION	\$ 742,000	\$ 2,328,282
AP-COMMUNITY CORRECTIONS	64,187	611,439
AP-COUNTY FUNDING	6,926	13,816
AP-COUNTY GRANTS	18,449	55,638
AP-DIVERSION TARGET PROGRAM	559,396	1,725,064
AP-OTHER GRANTS	33,862	96,655
AP-PR BOND	3,068	9,172
AP-PROG PARTICIPANTS	475	1,937
AP-TREATMENT ALT TO INCARCERATION	232,389	501,024
CAPITAL PROJECTS FUND	347,902	955,155
COUNTY GENERAL FUND	31,837,397	87,705,938
COUNTY GRANTS	2,454,548	6,561,473
DEBT SERVICE	-	-
ENTERPRISE FUND	195,300	832,966
INTERNAL SERVICE	3,502,836	9,464,395
SPECIAL REVENUE	2,177,197	6,607,653
Total	\$ 42,175,932	\$ 117,470,606

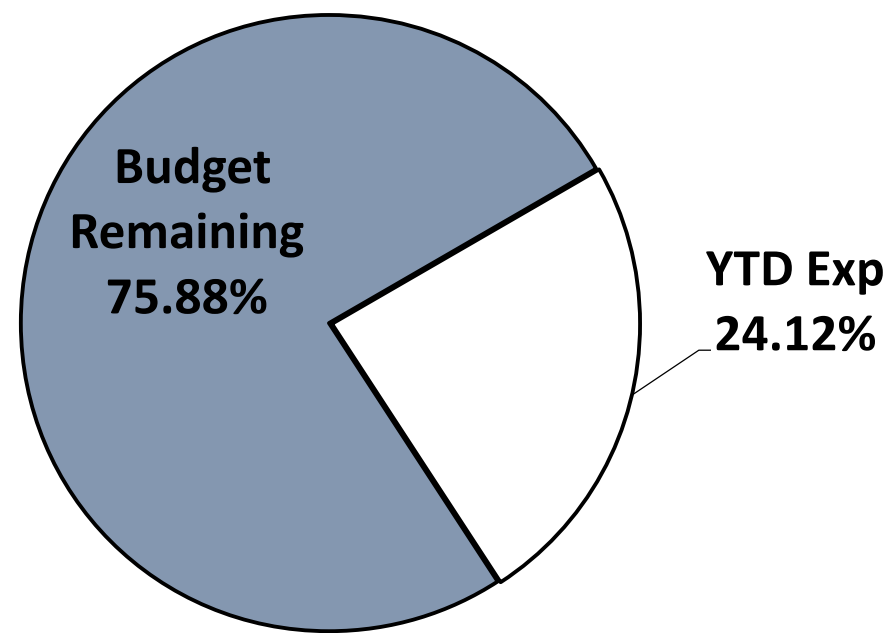
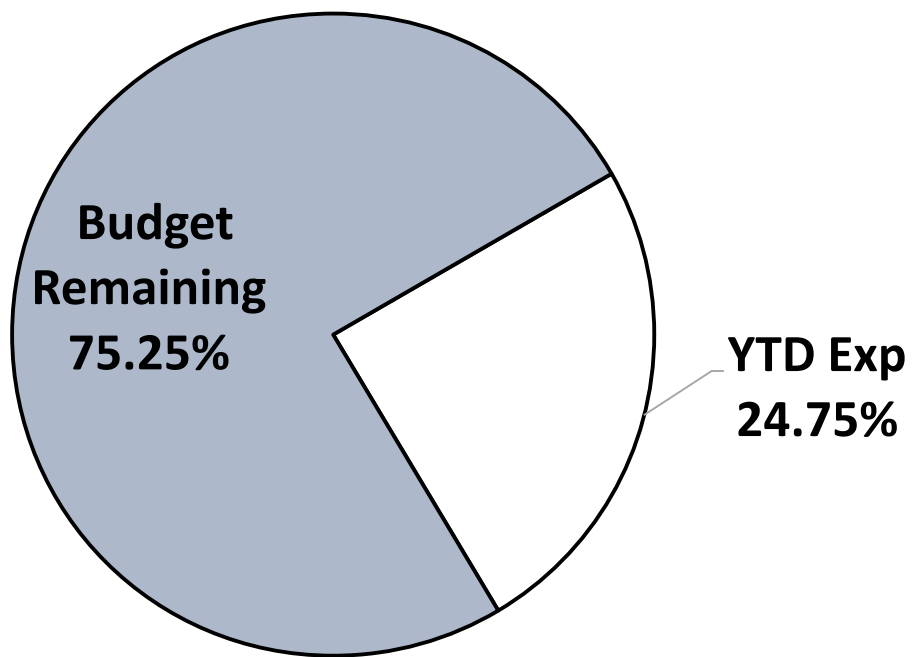
GENERAL FUND EXPENDITURE BY TYPE



Percentage of General Fund Expenditures YTD

Fiscal Year 2020

Fiscal Year 2019



- Unexpended General Fund
- General Fund Expenditures

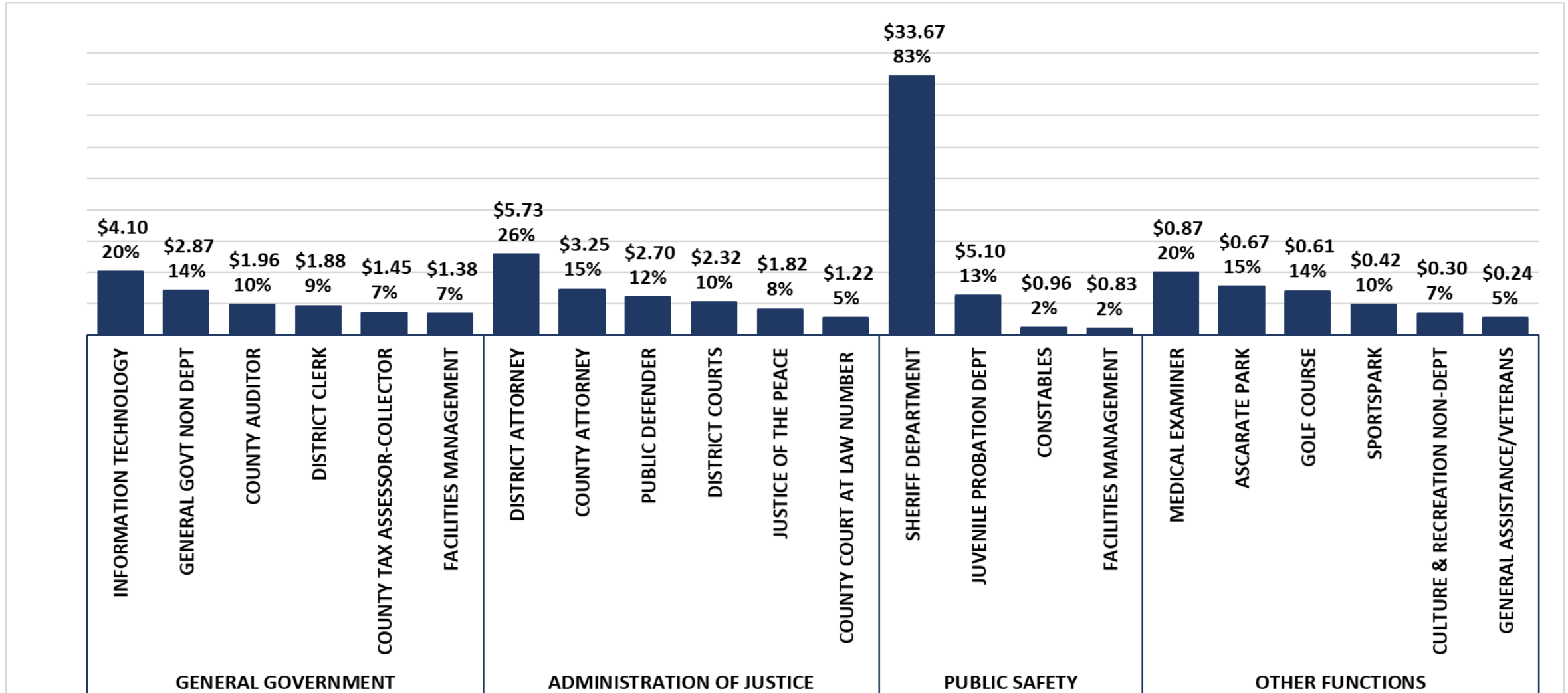
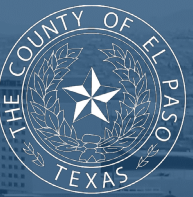


GENERAL FUND EXPENDITURE BY FUNCTION

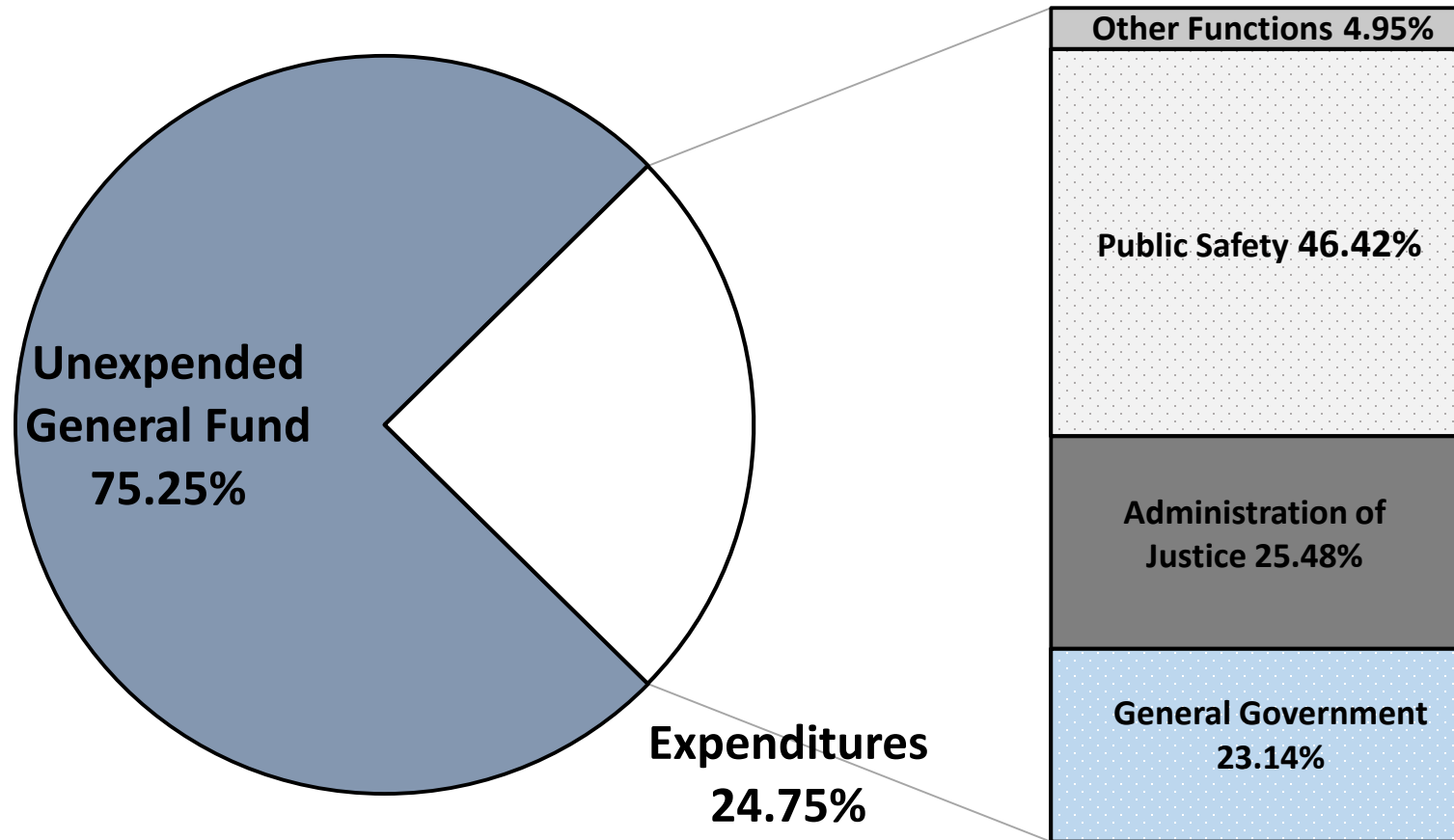
Function Description	Revised Budget	Period Actuals	YTD Actuals	% Budget Expended
GENERAL GOVERNMENT	\$110,264,477	\$6,965,707	\$20,291,555	18.40%
ADMINISTRATION OF JUSTICE	74,063,315	8,486,942	22,351,738	30.18%
PUBLIC SAFETY	133,654,848	14,826,013	40,716,831	30.46%
HEALTH AND WELFARE	8,746,743	645,746	1,784,022	20.40%
COMMUNITY SERVICES	381,520	-	-	0.00%
RESOURCE DEVELOPMENT	8,807,977	119,179	303,965	3.45%
CULTURE AND RECREATION	7,637,867	774,121	2,138,085	27.99%
PUBLIC WORKS	10,798,199	19,689	119,742	1.11%
Total	\$354,354,945	\$31,837,397	\$87,705,938	24.75%

*FM4 -33.33% of the fiscal year is expired

GENERAL FUND EXPENDITURES BY DEPARTMENT



Percentage of General Fund Expended YTD Fiscal Year 2020





Fund Balance

County Auditor's Financial Forecast As of January 31, 2020, FM04 (Unaudited)

