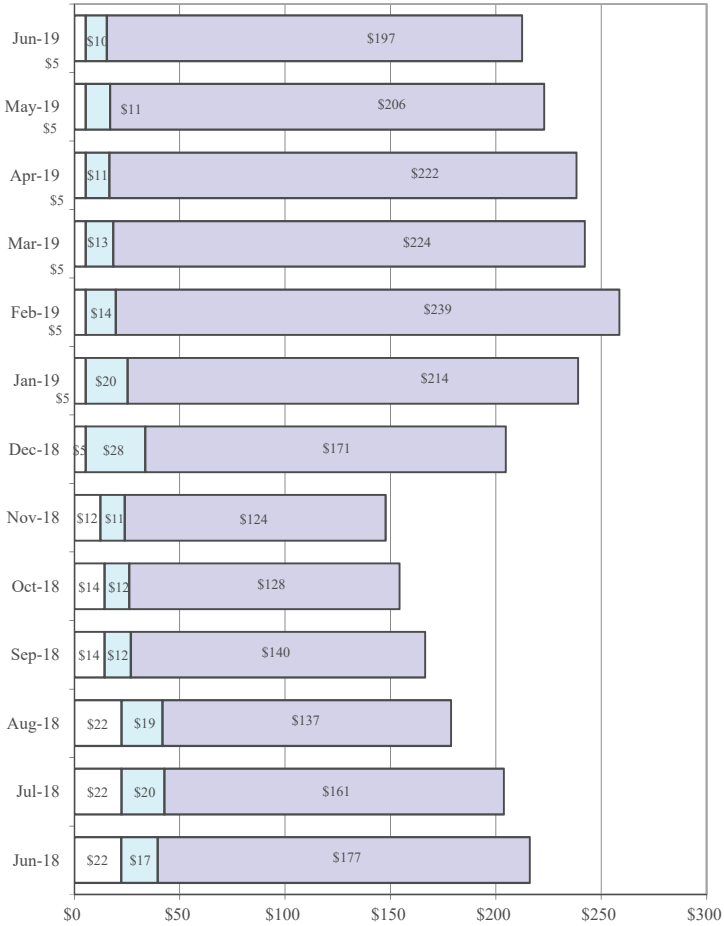


**County of El Paso  
Investment Portfolio  
As of June 30, 2019**

Type of Fund	TEXPOOL PRIME		TEXPOOL		Agency Notes at Par Value	
	Principal	YTD Interest	Jun Interest	Total	Total	Total
<b>General Fund &amp; Others:</b>						
Texpool Prime-General Fund	\$ 129,583,635.49	\$ 1,957,280.67	\$ 276,337.31	\$ 131,817,253.47	\$	\$ 131,817,253.47
Texpool Prime-County Attorney Bad Check Trust Fund	118,500.00	448.83	246.61	119,195.44		119,195.44
Texpool Prime-Boarder Crime Seizures	-	823.21	286.77	1,109.98		1,109.98
Texpool Prime-County Tourist & Promotion	3,392,278.96	58,293.49	7,154.34	3,457,726.79		3,457,726.79
Texpool Prime-County Coliseum Tourist Promotion	68,013.68	1,321.22	143.75	69,478.65		69,478.65
Texpool Prime-Commissary Profit	901,882.61	11,877.16	1,798.87	915,558.64		915,558.64
Texpool Prime-Court Records Preservation Fund	231,922.94	3,899.07	488.95	236,310.96		236,310.96
Texpool Prime-Court Reporter Service Fund	50,000.00	834.33	105.40	50,939.73		50,939.73
Texpool Prime-Co. Attorney's Commissions	140,448.99	1,870.75	289.22	142,608.96		142,608.96
Texpool Prime-Co. Attorney's Supplement Account	80,969.49	1,366.60	170.71	82,506.80		82,506.80
Texpool Prime-County Clerk's Record's Archives	-	-	-	-		-
Texpool Prime-County Clerk's Record's Management & Preservation	1,462,824.10	23,809.34	3,082.36	1,489,715.80		1,489,715.80
Texpool Prime-County Clerk's Vital Statistics	253,057.08	4,354.07	533.71	257,944.86		257,944.86
Texpool Prime-DA Food Stamp Fraud	185,000.00	701.81	385.03	186,086.84		186,086.84
Texpool Prime-Dist Courts Records Archives	516,729.99	8,719.39	1,089.46	526,538.84		526,538.84
Texpool Prime-Elections Contracted Services-T&A	888,000.00	3,581.49	1,533.29	893,114.78		893,114.78
Texpool Prime-Juvenile Probation National School	139,000.00	437.64	257.34	139,694.98		139,694.98
Texpool Prime-Juvenile Probation Supervision Fund	263,210.83	4,838.92	555.77	268,605.52		268,605.52
Texpool Prime-Law Library	126,080.26	2,181.35	265.94	128,527.55		128,527.55
Texpool Prime-Justice Court Building Fund	287,556.18	4,843.75	606.26	293,006.19		293,006.19
Texpool Prime-Justice Court Technology Fund	395,117.45	6,854.03	833.44	402,804.92		402,804.92
Texpool Prime-Courthouse Security	434,271.61	7,312.37	915.57	442,499.55		442,499.55
Texpool Prime-Transportation Fee Fund	-	-	-	-		-
Texpool Prime-Road & Bridge	7,222,261.81	130,696.04	15,245.47	7,368,203.32		7,368,203.32
Texpool Prime-Juvenile Probation Restitution	134,500.00	489.48	285.58	135,275.06		135,275.06
Texpool Prime-Project Care Electric	5,254,777.78	88,679.92	11,079.01	5,354,536.71		5,354,536.71
Texpool Prime-Probate Judiciary Support	179,083.72	3,316.86	378.19	182,778.77		182,778.77
Texpool Prime-Solid Waste	41,558.07	701.40	87.62	42,347.09		42,347.09
Texpool Prime-Water System Repairs	8,308.41	140.23	17.52	8,466.16		8,466.16
Texpool Prime-Vista Del Este Water	1,082,668.73	18,273.16	2,282.67	1,103,224.56		1,103,224.56
Texpool Prime-Debt Service Cert. Of Oblig-2001	194,552.56	6,824.74	459.71	201,837.01		201,837.01
Texpool Prime-G.O. Refund Bonds, Series 2011	2,272.56	557.05	8.05	2,837.66		2,837.66
Texpool Prime-Debt Service Cert. Of Oblig. 2012	48,155.05	10,146.16	340.58	58,641.79		58,641.79
Texpool Prime-G.O. Refund Bonds, Series 2015	386,298.86	4,574.72	813.17	391,686.75		391,686.75
Texpool Prime-G.O. Refund Bonds, Taxable 2015A	119,954.16	2,760.26	258.12	122,972.54		122,972.54
Texpool Prime-G.O. Refund Bonds, Series 2016A	1,037,046.66	28,365.76	2,223.56	1,067,635.98		1,067,635.98
Texpool Prime-G.O. Refund Bonds, Taxable 2016B	474,482.08	11,814.54	1,027.84	487,324.46		487,324.46
Texpool Prime-Debt Service Cert. Of Oblig-2016C	285,496.89	2,862.37	600.26	288,959.52		288,959.52
Texpool Prime-Taxable Cert. Of Oblig. Series 2016D	58,033.11	805.89	122.78	58,961.78		58,961.78
Texpool Prime-G.O. Refunding Bonds Series, 2017	1,373,812.81	14,658.82	2,650.56	1,391,122.19		1,391,122.19
Texpool Prime-Debt Service Cert. Of Oblig-2017	18,441.37	234.93	39.02	18,715.32		18,715.32
Texpool Prime-Health & Life	3,526,513.42	63,097.33	7,442.64	3,597,053.39		3,597,053.39
Texpool-General Fund	2,286,203.23	65,028.80	4,585.22	2,355,817.25		2,355,817.25
Texpool-Road & Bridge	129,436.90	2,024.41	257.29	131,718.60		131,718.60
Texpool-County Law Library	39,018.17	610.25	77.56	39,705.98		39,705.98
Texpool- East Montana Enterprise	1,256,025.70	19,644.39	2,496.70	1,278,166.79		1,278,166.79
Texpool-East Montana Reserve	103,612.85	1,620.52	205.96	105,439.33		105,439.33
Texpool-Commissary Profit	188,512.23	2,948.36	374.72	191,835.31		191,835.31
Texpool-Project Care Electric	38,564.35	603.16	76.66	39,244.17		39,244.17
Texpool-Co. Attorney's Commissions	42,862.74	670.37	85.20	43,618.31		43,618.31
Texpool-Health & Life	50,094.41	5,265.99	108.34	55,468.74		55,468.74
<b>Capital Projects Funds:</b>						
Texpool Prime-CP-Co. Capital Improvement	8,573,280.41	127,213.16	18,925.80	8,719,419.37		8,719,419.37
Texpool Prime-CP Capital Project 2012	20,709,760.97	438,816.56	43,849.00	21,192,426.53		21,192,426.53
Texpool Prime-Capital Projects-County Tax Capital Projects 2016C	2,352,976.62	42,251.13	4,966.21	2,400,193.96		2,400,193.96
Texpool Prime-Capital Projects-County Capital Projects 2016D	880,857.41	15,211.78	1,857.88	897,927.07		897,927.07
Texpool-County Capital Improvement	115,755.15	1,810.41	230.10	117,795.66		117,795.66
Texpool-County Capital Projects 2007	1,031,722.62	17,660.40	2,070.33	1,051,453.35		1,051,453.35
<b>Total All Investments</b>	<b>198,765,401.47</b>	<b>3,236,028.84</b>	<b>422,609.42</b>	<b>202,424,039.73</b>		<b>202,424,039.73</b>
<b>Total Texpool Prime</b>	<b>\$ 193,483,593.12</b>	<b>\$ 3,118,141.78</b>	<b>\$ 412,041.34</b>	<b>\$ 197,013,776.24</b>	<b>\$</b>	<b>\$ 197,013,776.24</b>
<b>Total Texpool</b>	<b>5,281,808.35</b>	<b>117,887.06</b>	<b>10,568.08</b>	<b>5,410,263.49</b>		<b>5,410,263.49</b>
<b>Totals</b>	<b>\$ 198,765,401.47</b>	<b>\$ 3,236,028.84</b>	<b>\$ 422,609.42</b>	<b>\$ 202,424,039.73</b>	<b>\$</b>	<b>\$ 202,424,039.73</b>
<b>Now Account Cash</b>						
General Fund					\$	5,720,833.33
Consolidated Funds					\$	10,020,179.20

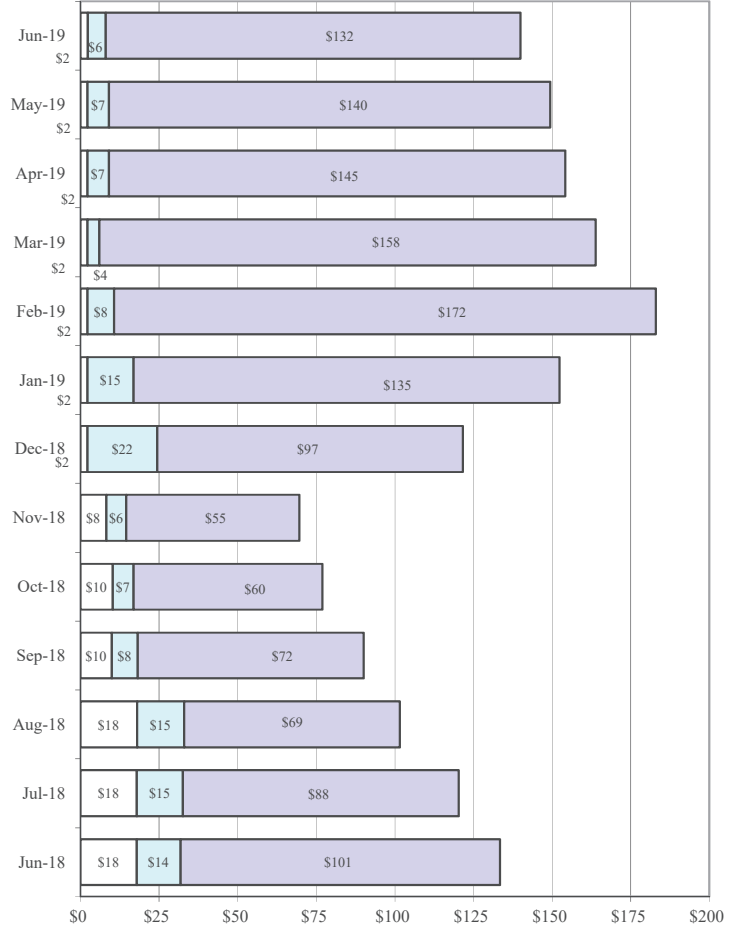
**Investment Portfolio All Funds**



Millions

□ Texpool □ Now Account Cash □ TexPool Prime

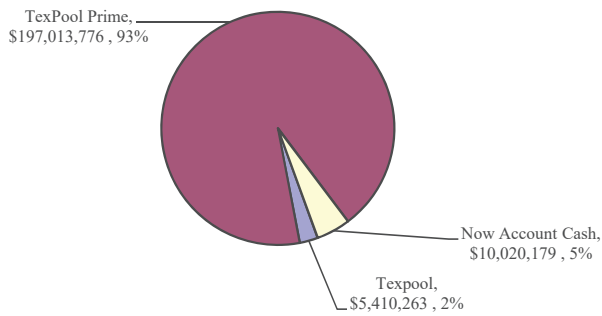
**Investment Portfolio General Fund**



Millions

□ Texpool □ Now Account Cash □ TexPool Prime

**Investment Portfolio All Funds, June 2019**



**Investment Portfolio General Fund, June 2019**

