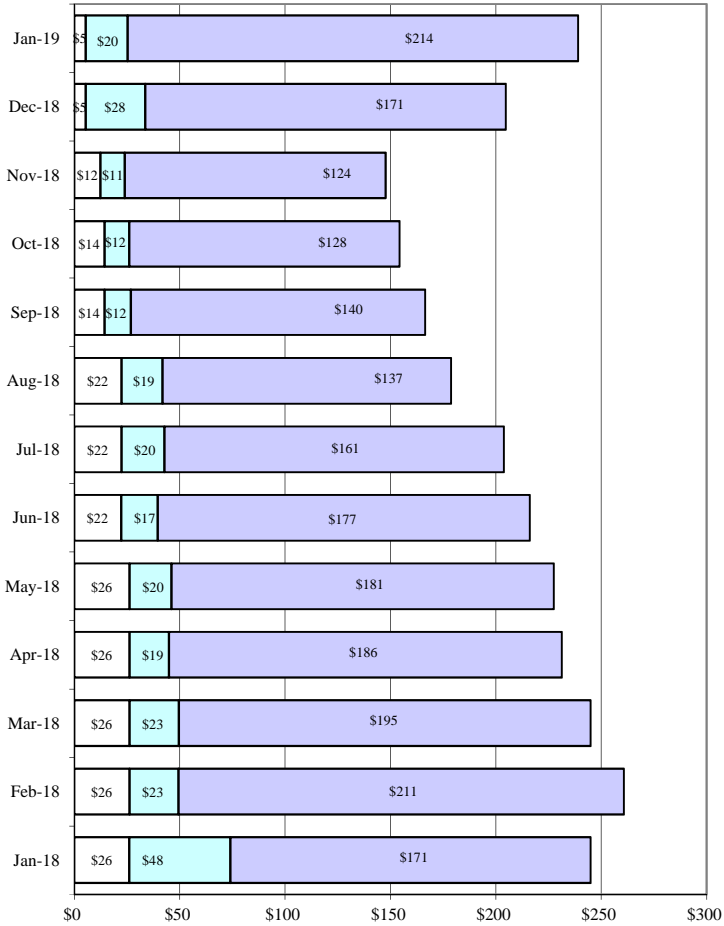


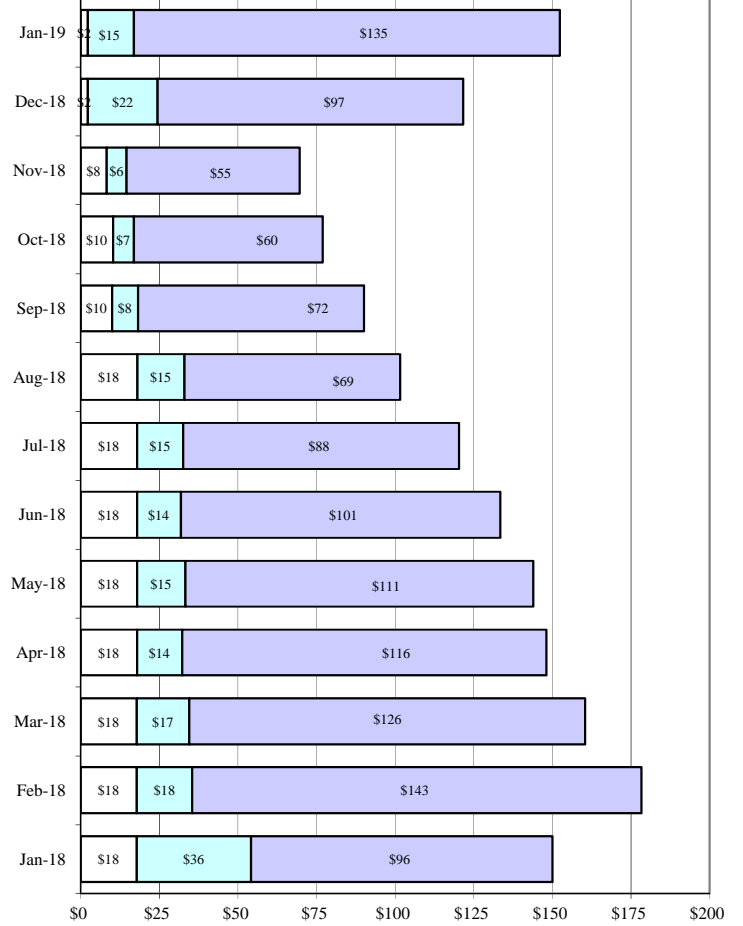
County of El Paso  
Investment Portfolio  
As of January 31, 2019

Type of Fund	TEXPOOL PRIME		TEXPOOL		Agency Notes at Par Value	Total
	Principal	YTD Interest	Jan Interest	Total		
<b>General Fund &amp; Others:</b>						
Texpool Prime-General Fund	\$ 134,795,701.80	\$ 388,685.86	\$ 251,983.02	\$ 135,436,370.68	\$	135,436,370.68
Texpool Prime-County Tourist & Promotion	3,442,278.96	21,315.97	7,720.84	3,471,315.77		3,471,315.77
Texpool Prime-County Coliseum Tourist Promotion	52,013.68	728.36	116.76	52,858.80		52,858.80
Texpool Prime-Commissary Profit	710,882.61	4,011.41	1,582.67	716,476.69		716,476.69
Texpool Prime-Court Records Preservation Fund	231,922.94	1,394.41	516.53	233,833.88		233,833.88
Texpool Prime-Court Reporter Service Fund	50,000.00	294.41	111.34	50,405.75		50,405.75
Texpool Prime-Co. Attorney's Commissions	101,448.99	616.57	225.96	102,291.52		102,291.52
Texpool Prime-Co. Attorney's Supplement Account	80,969.49	492.11	180.34	81,641.94		81,641.94
Texpool Prime-County Clerk's Record's Management & Preservation	1,462,824.10	8,019.87	3,256.24	1,474,100.21		1,474,100.21
Texpool Prime-County Clerk's Vital Statistics	253,057.08	1,620.12	563.82	255,241.02		255,241.02
Texpool Prime-Dist Courts Records Archives	516,729.99	3,138.60	1,150.91	521,019.50		521,019.50
Texpool Prime-Juvenile Probation Supervision Fund	263,210.83	1,892.24	686.87	265,789.94		265,789.94
Texpool Prime-Law Library	126,080.26	817.57	282.42	127,180.25		127,180.25
Texpool Prime-Justice Court Building Fund	287,556.18	1,738.17	640.46	289,934.81		289,934.81
Texpool Prime-Justice Court Technology Fund	395,117.45	2,584.70	880.46	398,582.61		398,582.61
Texpool Prime-Courthouse Security	434,271.61	2,622.33	967.22	437,861.16		437,861.16
Texpool Prime-Transportation Fee Fund	460,200.00	1,734.34	675.60	462,609.94		462,609.94
Texpool Prime-Road & Bridge	7,222,261.81	51,940.51	16,765.53	7,290,967.85		7,290,967.85
Texpool Prime-Project Care Electric	5,254,777.78	31,927.23	11,703.99	5,298,409.00		5,298,409.00
Texpool Prime-Probate Judiciary Support	199,083.72	1,209.96	443.42	200,737.10		200,737.10
Texpool Prime-Solid Waste	41,558.07	252.57	92.56	41,903.20		41,903.20
Texpool Prime-Water System Repairs	8,308.41	50.49	18.51	8,377.41		8,377.41
Texpool Prime-Vista Del Este Water	1,082,668.73	6,580.09	2,411.44	1,091,660.26		1,091,660.26
Texpool Prime-Debt Service Cert. Of Oblig-2001	1,717,101.92	951.15	2,887.84	1,720,940.91		1,720,940.91
Texpool Prime-G.O. Refund Bonds, Series 2011	99,362.31	254.81	186.95	99,804.07		99,804.07
Texpool Prime-Debt Service Cert. Of Oblig. 2012	2,402,498.53	2,036.93	4,112.53	2,408,647.99		2,408,647.99
Texpool Prime-G.O. Refund Bonds, Series 2015	534,989.78	335.15	904.10	536,229.03		536,229.03
Texpool Prime-G.O. Refund Bonds, Taxable 2015A	607,903.18	377.89	1,027.04	609,308.11		609,308.11
Texpool Prime-G.O. Refund Bonds, Series 2016A	3,929,976.21	9,883.02	7,430.48	3,947,289.71		3,947,289.71
Texpool Prime-G.O. Refund Bonds, Taxable 2016B	2,660,562.92	1,734.87	4,505.23	2,666,803.02		2,666,803.02
Texpool Prime-Debt Service Cert. Of Oblig-2016C	210,127.10	155.38	355.09	210,637.57		210,637.57
Texpool Prime-Taxable Cert. Of Oblig. Series 2016D	80,849.96	54.15	137.00	81,041.11		81,041.11
Texpool Prime-G.O. Refunding Bonds Series, 2017	1,855,697.89	1,792.81	3,199.77	1,860,690.47		1,860,690.47
Texpool Prime-Debt Service Cert. Of Oblig-2017	39,200.00	20.06	65.72	39,285.78		39,285.78
Texpool Prime-Health & Life	3,526,513.42	24,471.65	8,363.06	3,559,348.13		3,559,348.13
Texpool-General Fund	2,236,203.23	42,244.67	4,597.21	2,283,045.11		2,283,045.11
Texpool-Road & Bridge	129,436.90	722.84	264.12	130,423.86		130,423.86
Texpool-County Law Library	39,018.17	217.89	79.62	39,315.68		39,315.68
Texpool- East Montana Enterprise	1,256,025.70	7,014.17	2,562.97	1,265,602.84		1,265,602.84
Texpool-East Montana Reserve	103,612.85	578.61	211.43	104,402.89		104,402.89
Texpool-Commissary Profit	188,512.23	1,052.73	384.67	189,949.63		189,949.63
Texpool-Project Care Electric	38,564.35	215.37	78.69	38,858.41		38,858.41
Texpool-Co. Attorney's Commissions	42,862.74	239.36	87.46	43,189.56		43,189.56
Texpool-Health & Life	50,094.41	4,717.85	111.25	54,923.51		54,923.51
<b>Capital Projects Funds:</b>						
Texpool Prime-CP-Co. Capital Improvement	6,889,280.41	45,611.63	15,446.13	6,950,338.17		6,950,338.17
Texpool Prime-CP Capital Project 2012	27,059,760.97	165,751.96	60,374.02	27,285,886.95		27,285,886.95
Texpool Prime-Capital Projects-County Tax Capital Projects 2016C	2,502,976.62	15,341.42	5,575.19	2,523,893.23		2,523,893.23
Texpool Prime-Capital Projects-County Capital Projects 2016D	905,857.41	5,505.49	2,017.63	913,380.53		913,380.53
Texpool-County Capital Improvement	115,755.15	646.42	236.20	116,637.77		116,637.77
Texpool-County Capital Projects 2007	1,081,722.62	6,599.23	2,411.35	1,090,733.20		1,090,733.20
<b>Total All Investments</b>	<b>217,777,391.47</b>	<b>872,195.40</b>	<b>430,589.66</b>	<b>219,080,176.53</b>		<b>219,080,176.53</b>
<b>Total Texpool Prime</b>	<b>\$ 212,495,583.12</b>	<b>\$ 807,946.26</b>	<b>\$ 419,564.69</b>	<b>\$ 213,723,094.07</b>	<b>\$</b>	<b>213,723,094.07</b>
<b>Total Texpool</b>	<b>5,281,808.35</b>	<b>64,249.14</b>	<b>11,024.97</b>	<b>5,357,082.46</b>		<b>5,357,082.46</b>
<b>Totals</b>	<b>\$ 217,777,391.47</b>	<b>\$ 872,195.40</b>	<b>\$ 430,589.66</b>	<b>\$ 219,080,176.53</b>	<b>\$</b>	<b>219,080,176.53</b>
<b>Now Account Cash</b>						
General Fund					\$	14,605,986.15
Consolidated Funds					\$	19,867,640.85

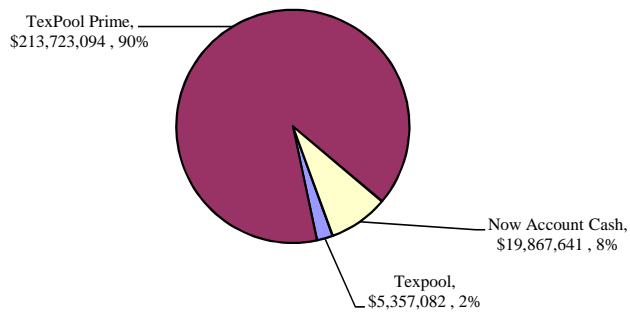
### Investment Portfolio All Funds



### Investment Portfolio General Fund



### Investment Portfolio All Funds, January 2019



### Investment Portfolio General Fund, January 2019

